

midg-it™

by **TEXOL**



Product Manual

List of Contents

- 1 Introduction
- 2 Safety Precautions
- 3 Operating Instructions
- 4 Machine Placement
- 5 Troubleshooting Guide
- 6 Cleaning Instructions
- 7 Maintenance and Service Chart
- 8 Winter Storage Instructions
- 9 Frequently Asked Questions
- 10 Warranty Information
- 11 Spare Parts List & Prices
- 12 Technical Data
- 13 Contact Details

1. Introduction

Dear customer,

You have purchased a new midg-it insect catching device. We want to thank you for the trust that you have put in our quality products and hope that you gain much benefit from its operation. The materials and workmanship have been used to ensure that no functional defects occur provided the unit is used for its designed purpose only.

Before putting the unit into use for the first time, please familiarise yourself with the contents of this instruction booklet.

Due to ongoing improvements of the product the information contained in this booklet is subject to alterations without the manufacturer being obliged to notify or update under the provision that the essential properties for safety and operation do not change. In cases of doubt please do not hesitate to contact your retailer.

Please visit the Texol website for the latest information on our products.

www.texol.co.uk

2. Safety Precautions

- The midg-it is designed for outdoor use only.
- The midg-it should only be used for insect capture.
- Carefully supervise children and animals when the unit is in use.
- In an emergency or if there is a smell of gas present always turn off the gas supply at the regulator. Do not use until the source of gas escape has been repaired by a competent person.
- Attention should be made to ensure the gas hose is not bent or buckled. The hose should be checked every time the cylinder is changed for cracking and damage. If hose needs changing use an approved hose BS3212 Type 2.
- Repairs and maintenance on the gas components should only be carried out by a qualified specialist.
- Use only the specified gas type.

We would point out that we are not liable according to the product liability act for damage caused by our machine as a result of: -

- a) improper repairs not carried out by authorised service engineers.
- b) or if ORIGINAL SPARE PARTS are not used as replacement parts.
- c) this product has been safety tested as is, any alterations to the unit will nullify your warranty.

Precautions for Handling Bait

The bait is harmful if swallowed, absorbed through skin or inhaled. Avoid skin, mouth and eye contact with the bait. Wash thoroughly with soap and water after handling. Avoid inhalation.

Statement of Practical Treatment

If inhaled – move to fresh air.

If on skin – wash affected area with soap and water.

If in eyes – flush with plenty of water. Call a physician if irritation develops.

Disposal of Used Bait

Wrap used tablet in plastic bag and discard into rubbish bin.

3. Operating Instructions

1. Place Midg-It in desired location.
2. Prior to switching unit on, check unit is in starting position as shown below
i.e. handle will be facing up.

NOTE: The Midg-IT will not start in any other position.

3. The bait/attractant should then be placed in the bait holder, as per the following diagrams.

a. open bait packaging



b. bait has a silver and white sides



c. white side should be to outside



d. silver face inside

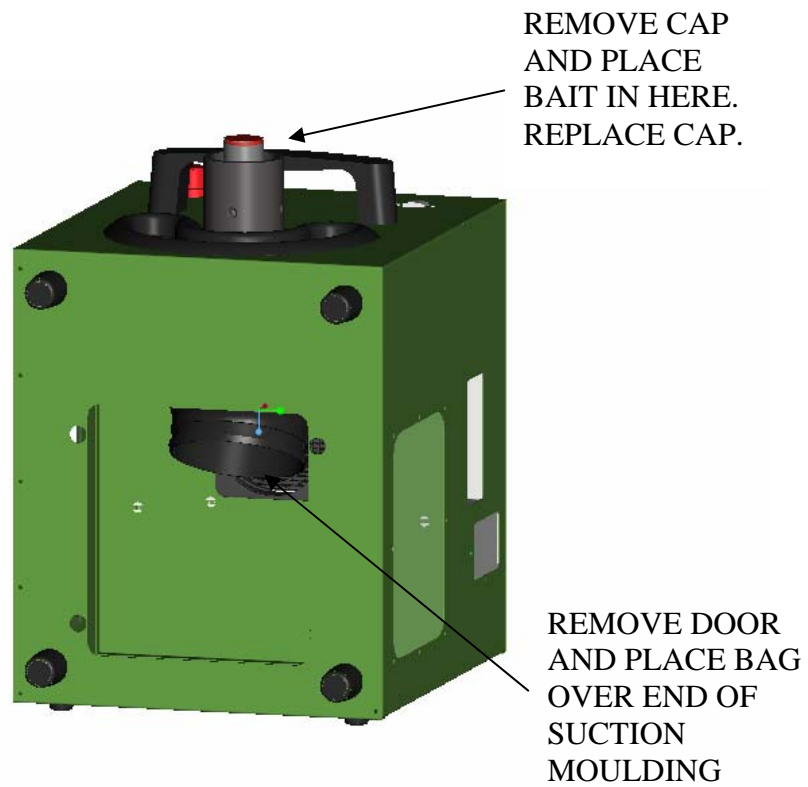


e. replace bait holder cap



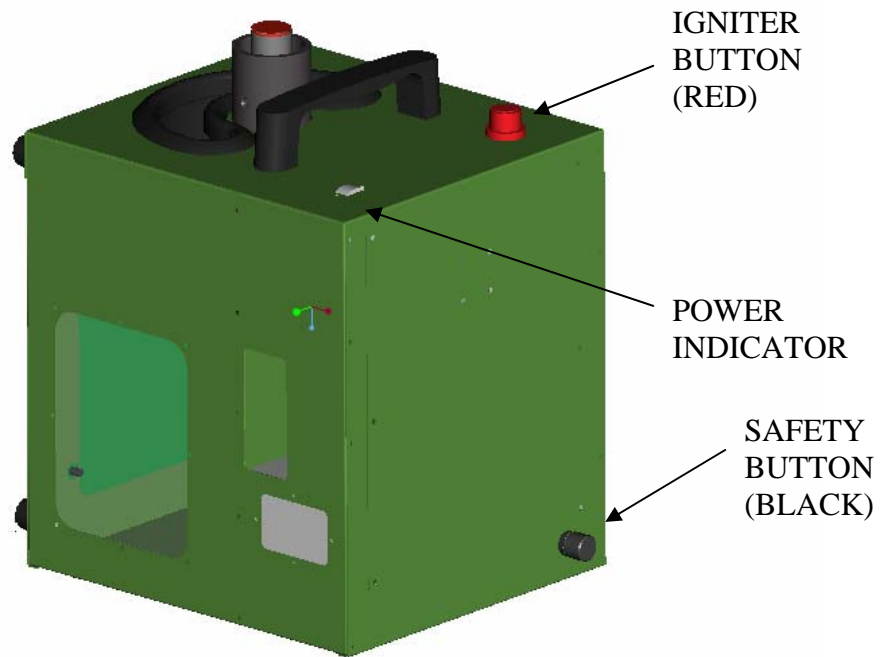
4. Remove door to capture chamber as shown below and fit capture bag.

Replace door.



STARTING POSITION

5. Connect the click-on regulator to patio gas bottle.
6. Turn grey lever on the regulator to vertical (on).
7. When starting from cold the system will have to be primed i.e. hold black button in for approx. 10 seconds. This lets the gas flow through the hose.



STARTING POSITION

8. Continue to hold black button in position.
9. After a further 5 seconds press red igniter button (keeping the black button held down) until a pop is heard, the gas has now ignited, release red button.
10. Keep the black button held down until the power indicator needle has moved between the red and the green section. This should take

approximately 90 seconds (please note that if the black button is released at any time during the above operation, you must repeat the process from step 8).

11. After releasing the black button the needle on the power indicator should continue to rise into the green section.

12. The Midg-It should now be placed in the catching position.



CATCHING POSITION

13. Your Midg-It will now be operational.

A 5kg patio gas bottle should last 10 to 12 days. This only applies if the Midg-It is left to run continuously, for which purpose it has been designed and tested. Continuous use is recommended for best results.

4. Machine Placement

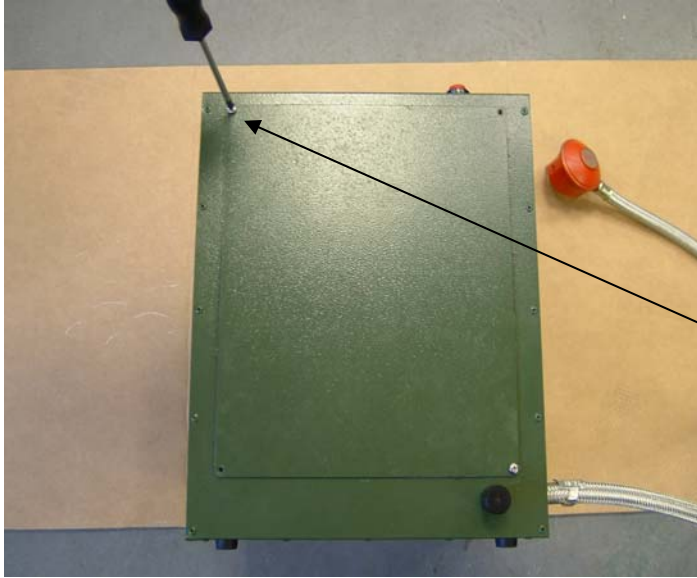
- As midges are attracted to any warm CO₂ producing source (including people and animals) the machine should be sited away from where people congregate. Ideally the midges should reach the Midg-It before they reach the people.
- It may be worth trying several locations to identify which is the most effective site for your Midg-It. Furthermore, changes in wind direction could alter the midges' behaviour so it may be necessary to move the trap from one location to another throughout the season. Ideally the Midg-It would be placed in an area protected from wind as this allows the attractant to which the midge are drawn to form around the unit
- Also, as the Midg-It is a portable device it is ideal for use when camping or caravanning, protecting the immediate area from severe midge conditions.

5. Trouble-Shooting Guide

Below is a list of problems that we believe that our customers may be able to solve themselves when the unit fails to operate correctly. If you are unsure about carrying out any of these tasks, please call our technical help line (01382 618444) for assistance.

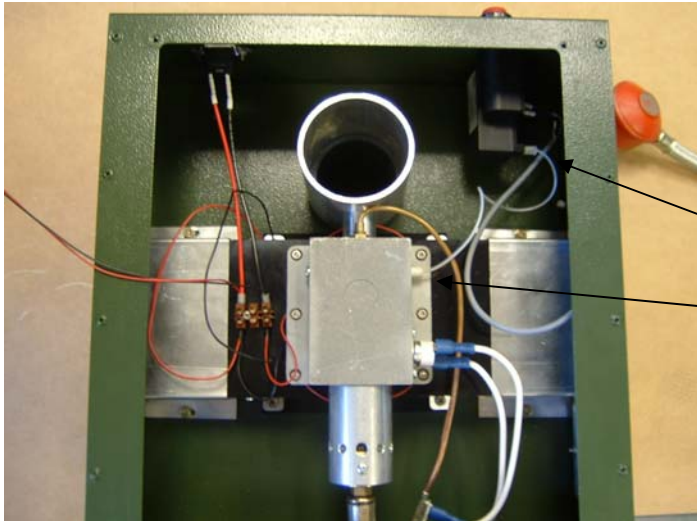
GAS CONNECTION: Ensure that the Quick-On gas regulator is fitted to the gas bottle correctly. The regulator is pushed on in position which allows the grey switch to turn.

IGNITION PROBLEMS: Firstly check the igniter button. Make sure the unit is in the starting position. You should hear a clicking noise when the red button is depressed. If the clicking noise cannot be heard, unscrew the red button Cap and replace the AA battery. Screw the cap back on and retry. If there is still no clicking, remove the service panel as shown in figures 1, 2 & 3.



REMOVE 4
SCREWS

Fig. 1



CHECK WIRE
IS INTACT

Fig. 2



UNSCREW IGNITER
COVER TO
REPLACE
BATTERIES

Fig. 3

STEP 1 Remove the six screws as shown in fig 1 using a Phillips head screwdriver.

STEP 2 You can now check the wire connection from the igniter to the spark tip as in fig 2.

STEP 3 If wire is loose or broken, contact the help-line for advice.

STEP 4 Replace the service panel as shown in fig 3 and retry.

**** NEVER TRY TO IGNITE THE Midg-It WHEN THE SERVICE PANEL IS REMOVED AS IN FIG 2. ****

STEP 5 If the problem persists, a Texol engineer should be called to rectify the fault.

NOZZLE HOUSING BLOCKAGE: Assuming that the regulator is fitted properly and the igniter is sparking, the next check is the Nozzle Housing.

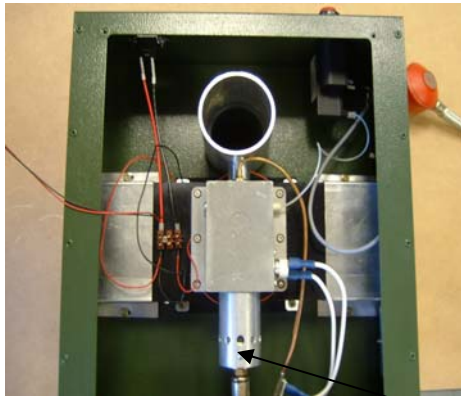
This can become blocked due to spiders casting a web inside the housing, this restricts the gas flow which does not allow the combustion process to occur.

See figure 4 below.

The nozzle housing can be cleared with the use of an air duster aerosol dispenser (see spare parts list for aerosol). Firstly remove service panel as before, then using the tube attachment on the air duster, insert the tube into the nozzle housing through the air vents. Try to get the tube pointing up towards the combustion chamber area and disperse the air duster to clear any

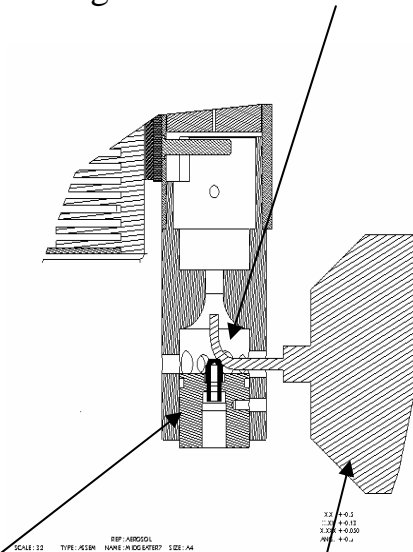
blockages. See fig 5 below. It is important to ensure that the nozzle housing and the chimney area are kept clear. Replace the service panel and repeat the ignition process

Fig 4 CHIMNEY AREA



NOZZLE HOUSING

Fig 5 AEROSOL TUBE



AIR DUSTER AEROSOL

POWER INDICATOR: If your Midg-It has ignited but the power indicator needle does not move from the red area, check that the fan in the midge capture chamber is working. If the fan is working, the Midg-It can still be used even though the power gauge is not operational. A new gauge can be ordered by calling the helpline.

FAN FAILURE: If your Midg-It starts up but the fan fails to operate, turn the gas off. A new fan can be ordered by calling the helpline.

Midg-It CUTTING OUT: Your Midg-It is operational but after a short period of time the Midg-It cuts out. This fault may be caused by a problem with the bi-metallic switch which is located on the engine. A new switch can be ordered by calling the helpline.

If you have problems with any of the trouble-shooting guides, please do not hesitate to call the Midgeater Helpline 01382 618444. When no one is available to take your call please leave a message with your name and contact number where you can be reached. We will make every effort to reply to your call within the working day.

6. Cleaning Instructions

Tools required for cleaning are, a Philips screwdriver and a vacuum cleaner with crevice attachment.

1. Remove midge capture bag
2. Clean midge capture chamber with a damp cloth or vacuum cleaner
3. Remove service panel by removing 6 screws as per Fig 6.
4. Carefully allow service panel to hang down, the service panel being held by the connecting wires as in Fig 7.
5. Clean out the chimney/ flue area using a vacuum crevice tool or similar as per Fig 8.
6. Vacuum out the nozzle housing ensuring that the air holes are clear, again using crevice tool or similar (Fig 9).
7. Replace the service panel.

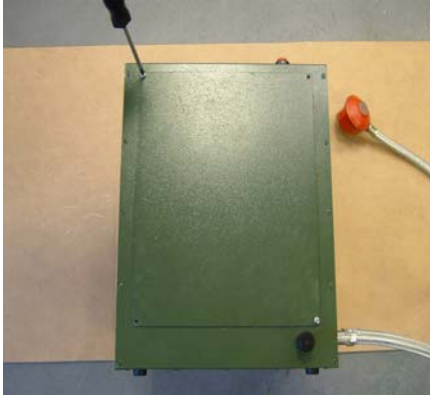


Fig 6

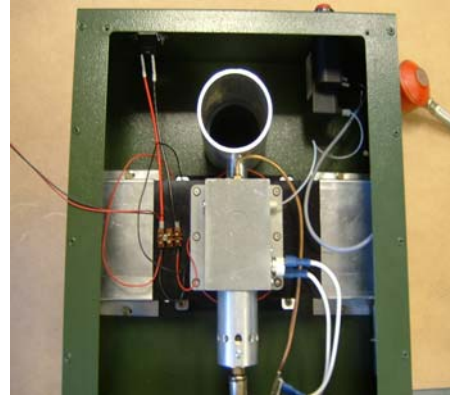


Fig 7



Fig 8



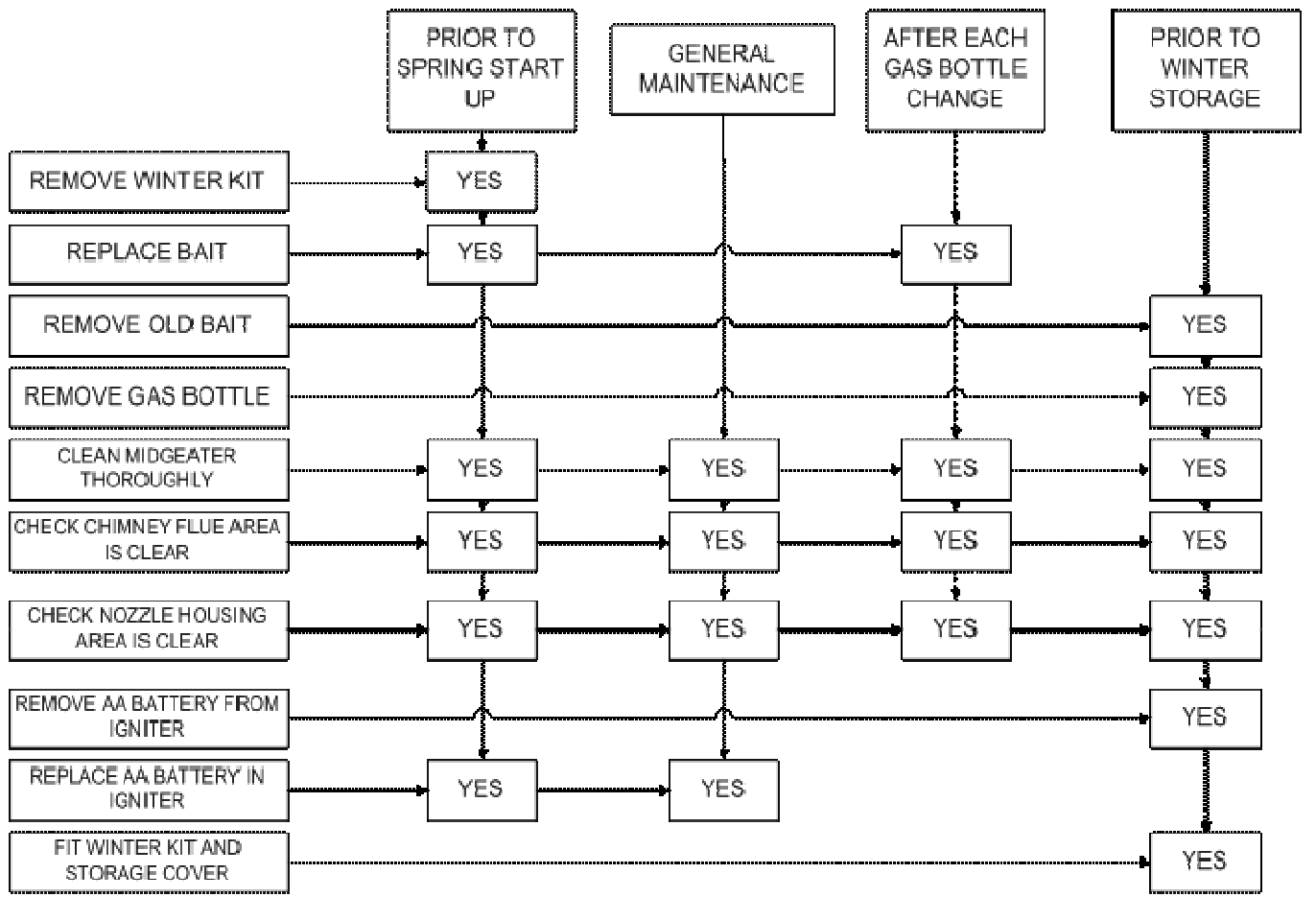
Fig 9

7. Maintenance and Service Chart

MAINTENANCE AND SERVICE GUIDE

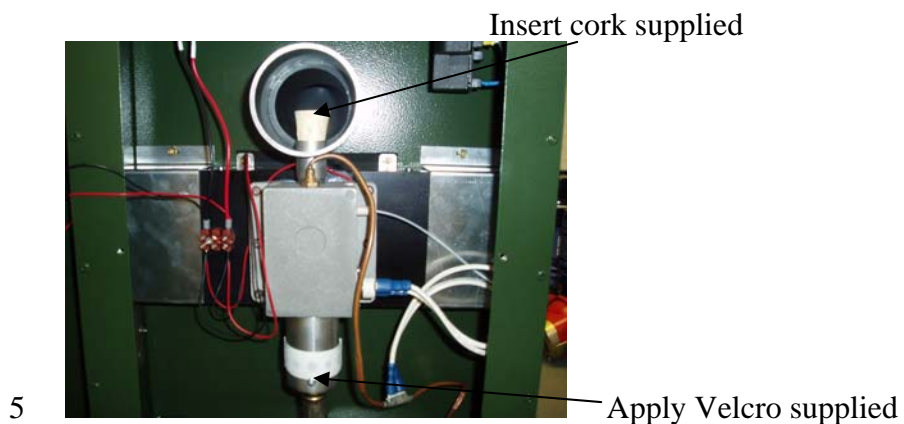
Maintenance and service work should only be carried out when the Midgeater has been turned off and the gas supply disconnected.

The following maintenance tasks may be carried out by the owner/user. All other maintenance tasks should be carried out by a Texol engineer.



8. Winter Storage Instructions

We strongly recommend that your Midg-It is thoroughly cleaned as per the cleaning instructions previous and also by using the supplied winter kit (contact helpline if winter kit is required) before winter storage. By following the instructions below, this should help to prevent any future problems arising on start-up next season.



1. After removal of service panel, insert the cork into the exhaust chimney and apply the Velcro strip to cover the combustion unit air holes.
2. Remove any remaining bait from bait holder.
3. Store Midg-It in a dry place, ideally indoors i.e. garage or garden shed

NOTE: *WINTER KIT TO BE REMOVED PROIR TO SPRING START-UP*

9. Frequently Asked Questions.

Q. How does the Midg-It work?

A. The Midg-It draws insects towards it by emitting a plume of harmless carbon dioxide. This is produced as a by-product of burning propane through catalytic conversion, which also produces warmth and moisture. These attractants combined with a bait tablet provide the formulae to which insects are attracted. When they fly towards the machine they are expecting a tasty blood meal. The Midg-It then sucks them into a disposable bag. No insecticides are used.

Q. How long should my gas bottle last?

A. Approx 10 – 12 days for a 5kg bottle (when the Midg-It is running 24/7).

Q. When should I replace the bait sachet?

A. The bait sachet should be replaced every 28 days.

Q. Should I switch my Midg-It off during the day?

A. No. Midg-It has been designed to be kept running 24/7, it should be noted that if the Midg-It is switched off any captured midge will escape from the capture bag.

Q. Where can I buy Midg-It spares bags & baits?

A. You should be able to purchase these from the retailer that you purchased your Midg-It from.

Q. How do I dispose of the midge in the capture bag?

A. Remove capture bag and pull draw strings. Place capture bag inside a sealed plastic bag and leave for several days. The dead midge can then be disposed of at your discretion.

Q. My Midg-It has caught plenty of midge but there are still plenty in other parts of the garden.

A. The Midg-It is designed to be moved around. You may have to try several locations before you identify the best position for your Midg-It.

Q. I am having difficulty sourcing patio gas locally.

A. Contact Calor Belshill for information on suppliers. Ph – 01698 745532.

SHOULD THERE BE ANY PROBLEMS OR QUESTIONS IN RELATION
TO THIS PRODUCT THAT YOU STILL REQUIRE ANSWERS TO
PLEASE DO NOT HESITATE TO CONTACT THE MIDGEATER
HELPLINE AT TEXOL
ON 01382 618444 OR EMAIL US AT (www.midgeater@texol.co.uk)

10. Warranty Information

The Midg-It device is guaranteed for a period of 1 year from date of purchase, provided that the equipment is handled in accordance with the instructions.

As a valued customer and someone who we hope is benefiting from the use of our Midg-It product, Texol services has put together an offer of extended warranty which we are sure will be of interest to you.

This extended warranty offer has been put in place to back up the excellent service already provided to our customers. If you wish to take up this offer it is available at a cost of £75.00 plus VAT at 17.5% total cost being £88.12. This extended warranty cover will last for a period of 12 months. The period of cover will commence as soon as your initial warranty expires.

The purchase of the 1 year extended warranty must be made at least 1 full calendar month prior to the initial warranty ending, Warranty cover otherwise shall then cease and service charges shall apply if call-outs are required.

WHAT IS COVERED

1. All defective parts
2. Manufacturing defects
3. Call out charges
4. Labour charges

WHAT IS NOT COVERED

1. Accidental damage.
2. Acts of God – weather damage
3. Vandalism.
4. Theft.
5. Site / Catch issues.
6. Self repair attempts

Should you wish to proceed with this offer of extended warranty please contact a member of staff at Texol. Ph – 01382 618444. Please have proof of Midg-It purchase at hand when you call as this is a necessary requirement to enable purchase of extended warranty.

11. Spare Parts List

Please find below a list of parts that can be ordered by calling the helpline (01382 618444). For the self assembly of parts, this is only a recommendation. If you require a service engineer to fit the parts, call the helpline.

<u>Parts List</u>	<u>Self Fitted</u>	<u>Service Eng. Rqd</u>	<u>Part No.</u>
1 Combustion Unit Complete		*	202665
2 Spark Tip / Lead	*		202568
3 Bi Metallic Switch	*		202601
4 Multispark	*		202911
5 Transport Handle	*		203315
6 Power Indicator / Fan Assy		*	202891
7 Large Fan		*	202726
8			
9 Black Acetal Cap	*		202697
10 Safety Button Cover	*		202868
12 Bait Holder	*		202581
13 Bait Holder Cap	*		202582
14 Bait Holder Fixings Tapped	*		202596
15			
16			
17 Foot – Anti-Skid	*		016752
18 Foot – Base Feet	*		203314
19			
20			
21			
22			
23 Vacuum Door	*		203316
24 Door Latch	*		203318
25 View Window	*		203317
26 Mouthpiece	*		203319
27 Service Panel	*		202714
28 Air Vent Brackets	*		203313
29 Winter Kit / Cover	*		202678
30 Aerosol	*		203667

12. Technical Data

Gas Type :

Propane I_{3p}

Gas supply pressure :

30, 37, 50mbar

Nominal Heat Input :

0.25kW

Unit Dimensions (catching position) :

340mm(H) x 300mm (W) x 360mm (L)

Weight :

Approx. 11kg

Colour :

Green RAL6020

Direct Countries of Destination :

GB & IE

13. Contact Detail

Manufactured by Texol Products Ltd

Myrekirk Road, Dundee, Scotland, DD2 4SX.

Patent Applied For : No. 0427211.8

For stockists of replacement bags & baits call 01698 740660.

To order Calor Patio Gas call 0800 626 626 or visit www.midgeater.co.uk

For warranty and/or technical enquiries, call the Midgeater helpline on

01382 618444 or e-mail to

midgeater@texol.co.uk